



Plymouth Town Garage, Plymouth CT

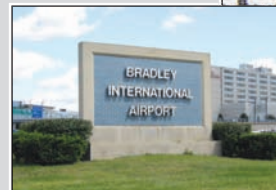
- 60 x 50 Addition to existing Public Works Maintenance Facility
- Project included structural design responsibility
- Fast track project done during the middle of winter



Before addition

Bradley International Airport, Windsor Locks CT

- Installed two (2) pre-cast concrete sign base, with a cultured stone veneer
- Original sign was non-lighted; new sign has a light box



Before



MISSION STATEMENT

At Richards Corporation, we believe teamwork is the key to success. It's a belief that's perhaps best reflected in our corporate mission statement: **TEAM**

Total customer focus.

Expansion and development of key resources through continuous improvement of our people, services, products, and capital.

Achieve maximum impact for the benefit of our customers, suppliers, and people.

Market leadership through strategic partnerships with key contractors and suppliers as we expand our reach regionally, and nationally.



RICHARDS CORPORATION IS
SYNERGY IN MOTION.



72 North Harwinton Avenue | Terryville, CT 06786

(860) 583-9229 | FAX (860) 582-5202

www.richardscorp.com

Richards Corporation is a full scale general, site-work and concrete contractor specializing in large, time compressed and high profile construction projects.

Established in 1967, Richards Corporation is currently operated by the third generation of family members. Richards currently performs approximately \$45,000,000 in sales per year on projects ranging from full scale retail development to various municipal and government facilities. Richards currently employs over one hundred men and women. Richards geographic work range is all of Connecticut, Western Massachusetts, and Eastern New York.

Typical project range is from \$100,000 to \$20,000,000 with close to 90% of our work performed from in-house sources. We are fully bondable and insured.

Richards Corporation Completed Projects



Whitney Center

- Construction of new mid rise active adult community
- Project included demolition of several out buildings to make room for new multi story apartment complex. Richards' scope consisted of moving earth, extensive underground utilities, new parking garage, paving, walks and landscaping including a beautiful waterscape.

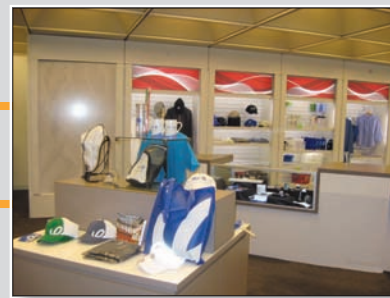
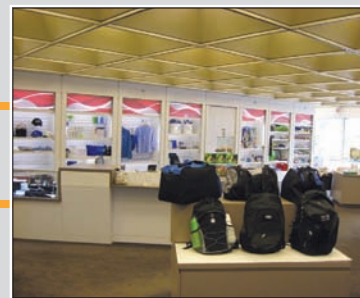
Central Connecticut State University, New Britain CT

- New 75,000 SF Academic Building
- Large Drainage and Detention System
- Deep foundations with shoring and dewatering
- Concrete and Paver Hardscaping with Landscape Walls



General Electric Store Renovation, Fairfield CT

- Renovation of employee store



West Bristol, Bristol CT

- Job consisted of moving 100,000 CY of earth, extensive underground utilities, new walks, landscaping and paving



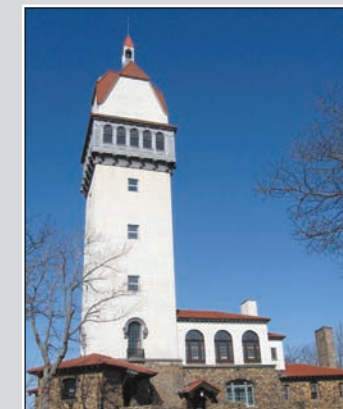
Derby-Shelton Rotary Pavilion, Shelton CT

- Built at Veteran Memorial Park in Shelton
- Consisted of structural steel frame, wood timbers and decking
- Masonry piers surrounded structural steel



Heublein Tower, Department of Environmental Protection, Simsbury CT

- Project consisted of the abatement of lead paint and glazing on the window sash and prepped the opening to accept the new windows
- Use of a crane along with boom lift to install windows due to location



General Electric Skylight Installation, Fairfield CT

- Removal of (3) existing, 36' wide by 80' long skylights and the installation of new skylight trusses consisting of a tube type steel truss, with metal decking, along with an EPDM roofing

72 North Harwinton Avenue | Terryville, CT 06786

(860) 583-9229 | FAX (860) 582-5202 | www.richardscorp.com

